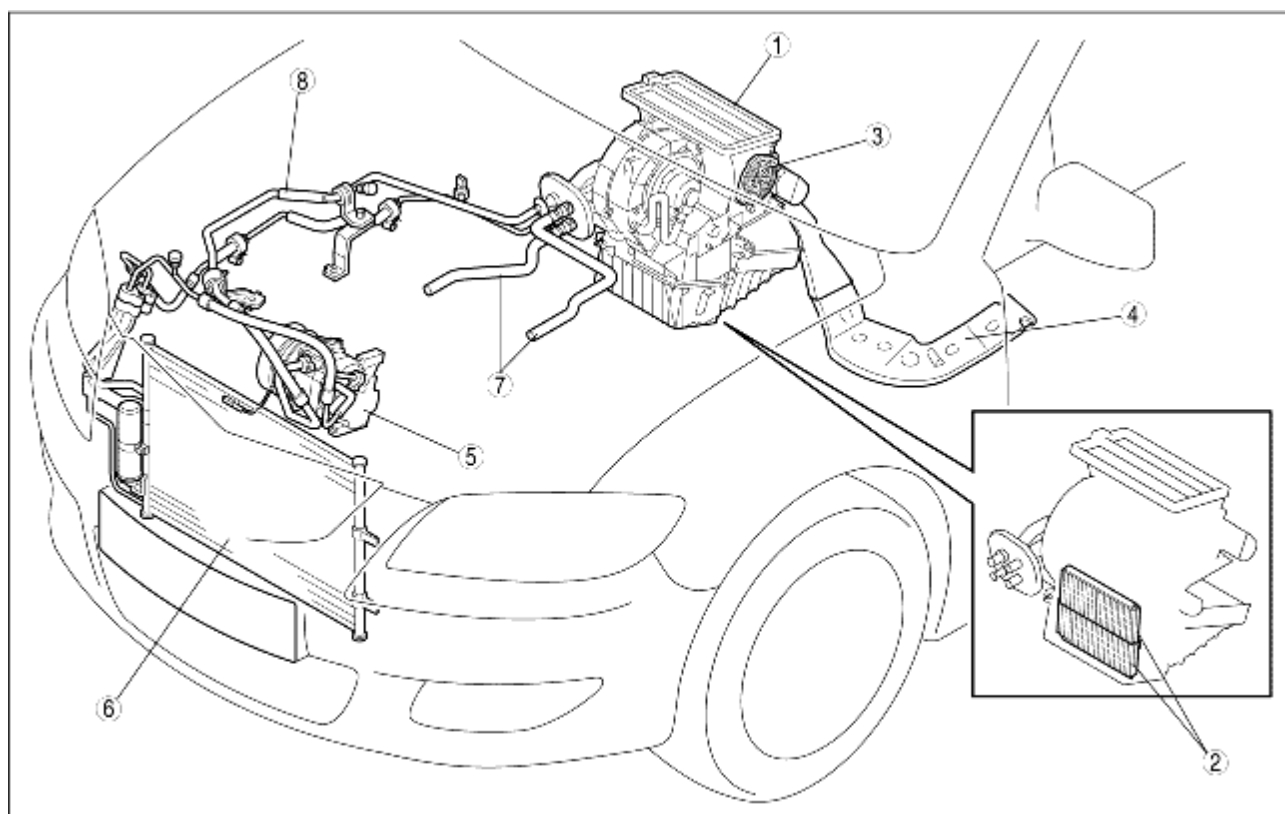


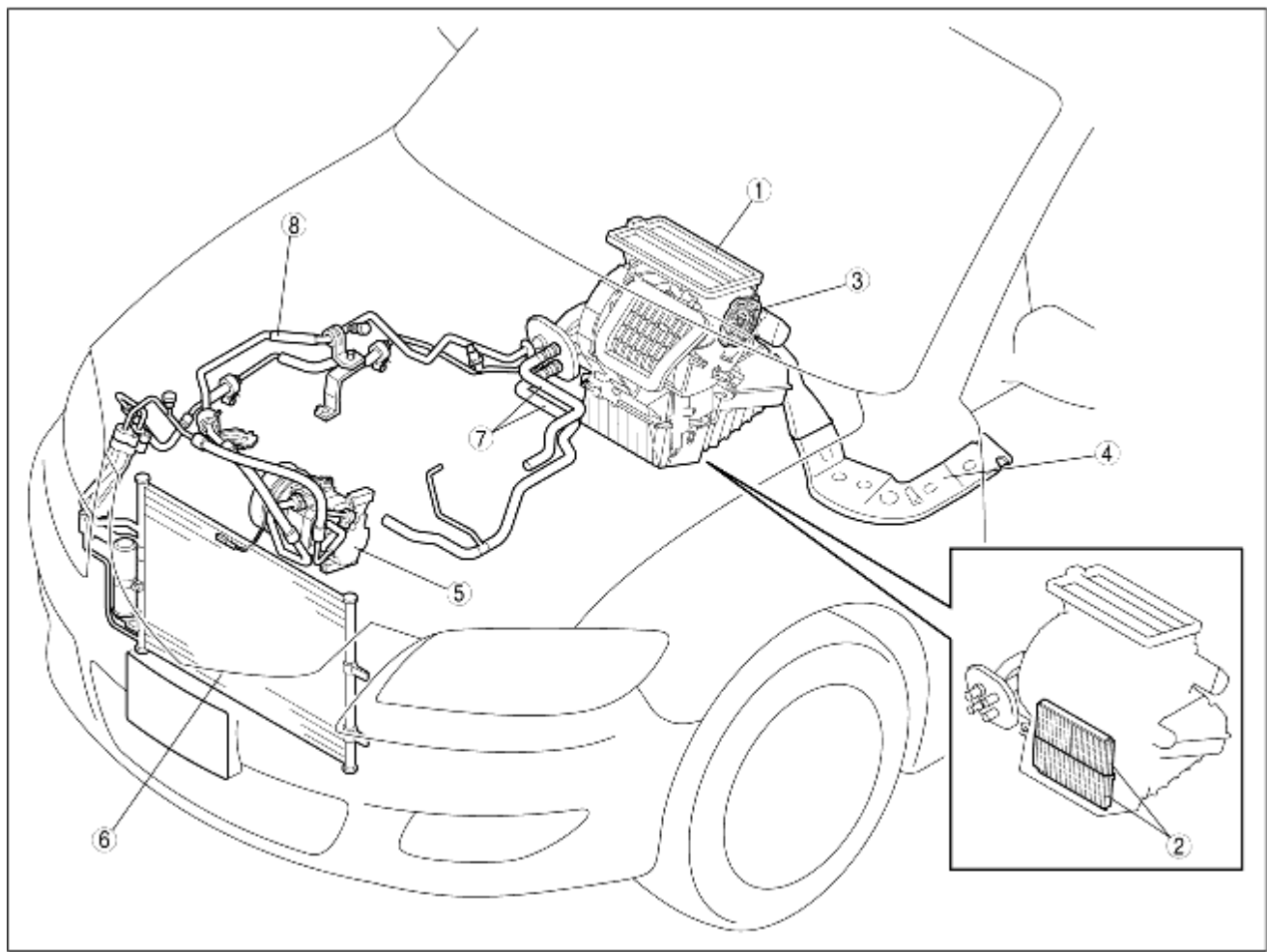
## HVAC BASIC SYSTEM LOCATION INDEX

B3E071101040W01

**L.H.D.**

B3E0700W001

**R.H.D.**



B3J0711W015

1	A/C unit (See <a href="#">A/C UNIT REMOVAL/INSTALLATION.</a> ) (See <a href="#">A/C UNIT DISASSEMBLY/ASSEMBLY [FULL-AUTO AIR CONDITIONER].</a> ) (See <a href="#">A/C UNIT DISASSEMBLY/ASSEMBLY [MANUAL AIR CONDITIONER].</a> ) (See <a href="#">EXPANSION VALVE REMOVAL/INSTALLATION.</a> ) (See <a href="#">EVAPORATOR INSPECTION.</a> ) (See <a href="#">HEATER CORE INSPECTION.</a> )
2	Air filter (See <a href="#">AIR FILTER REMOVAL/INSTALLATION.</a> ) (See <a href="#">AIR FILTER INSPECTION.</a> )
3	Airflow mode main link (See <a href="#">AIRFLOW MODE MAIN LINK REMOVAL/INSTALLATION.</a> )
4	Rear heat duct (See <a href="#">REAR HEAT DUCT REMOVAL/INSTALLATION.</a> )
5	A/C compressor (See <a href="#">A/C COMPRESSOR REMOVAL/INSTALLATION [Z6, ZJ].</a> ) (See <a href="#">A/C COMPRESSOR REMOVAL/INSTALLATION [LF].</a> )
6	Condenser (See <a href="#">CONDENSER REMOVAL/INSTALLATION.</a> ) (See <a href="#">CONDENSER INSPECTION.</a> )
7	Heater hose
8	Refrigerant line (See <a href="#">REFRIGERANT LINES REMOVAL/INSTALLATION [Z6, ZJ].</a> ) (See <a href="#">REFRIGERANT LINES REMOVAL/INSTALLATION [LF].</a> )